



SOUTH SUBURBAN COLLEGE

# Fall 2021 Faculty Development Days

South Suburban College Bookstore



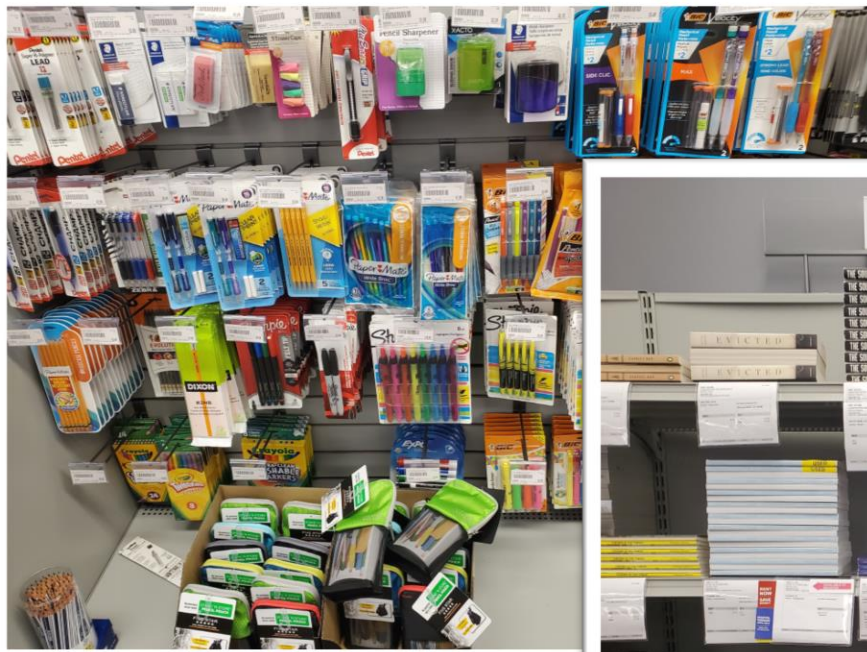
# **Welcome to the SSC Bookstore**



**Kevin Sandstrom**  
**Store Manager**  
[k.sandstrom@follett.com](mailto:k.sandstrom@follett.com)

**Nathan Sutherlin**  
**Regional Manager**  
[nsutherlin@follett.com](mailto:nsutherlin@follett.com)





# SSC Bookstore Website

Clothing & Accessories > Men

Men (4)

### Category

T-Shirts & Tanks (1)

Hats (1)

Shorts & Pants (1)

Polos (1)

Size +

Color +

Brand +

NEW



South Suburban College Ice  
Polo  
Clique  
\$30.00

NEW



South Suburban College  
Trucker Cap  
Legacy  
\$26.00



see more colors  
South Suburban College  
Short Sleeve T-Shirt  
MV Sport  
\$12.95



South Suburban College  
Open Bottom Sweatpants  
Champion  
\$34.00

Sort By  
Best Sellers ▾

01

# Follett ACCESS

# Inclusive ACCESS Content Instructions for Pearson & Redshelf Titles

## Student Access Instructions Option #1

**Log in using the URL for BryteWave :**

**<https://brytewave.redshelf.com/>**

- Forgot your password or didn't receive your password?
- Go to: <https://Brytewave.redshelf.com>
- Select the Log In button in the upper right.
- Select 'Forgot Password' or navigate to this link:  
<https://brytewave.redshelf.com/accounts/forgot/>
- Use your school email address to reset your password.

## Student Access Instructions Option #2

**Use the link in D2L**

- Click on your course in D2L
- Then choose the BryteWave link named BryteWave Course Materials.
- Choose the digital course material you want to access
- Click on the title and some product details will pop up. For an ebook you can click READ NOW to open it in a new tab.
- Some digital products require a code to access the materials on the publisher's website. Click Copy the Code to Clipboard and then click Access Courseware. You will paste that code in the designated field on the site you are sent to.
- If your product doesn't have a code to copy, then you just click Access Courseware to be directed to your digital product.



# Inclusive ACCESS Content Instructions for Pearson & Redshelf Titles

The screenshot shows the Brightspace LMS interface for the course "American Government 101 A Spring 2...". The top navigation bar includes "D2L | Brightspace", the course title, and icons for a grid, email, chat, and a notification bell. A user profile "SS Sample Student" is visible. Below the navigation bar is a dark grey menu with "Course Home", "Content", "Grades", "Class Progress", "Course Tools", and "Help". A search bar labeled "Search Topics" is on the left. A sidebar on the left contains "Bookmarks", "Course Schedule" (1), "Table of Contents" (13), "American Government 101 A" (3), "Pub Tests" (9), and "Stable Links" (1). The main content area is titled "American Government 101 A" with a "Print" icon. Below this is a section for "AMERICAN GOVERNMENT 101 A Introduction to American Government". The "Your Materials" section displays two items: "MindTap: Online Access, American Government" (labeled COURSEWARE) and "American Government Politics Today: Essentials" (labeled eBook). Both items have "VIEW DETAILS" links.

The screenshot shows the "Product Details" page for "MindTap General Chemistry Online Courseware". The top section features the product cover image. Below the image, the title "MindTap General Chemistry Online Courseware" is displayed, followed by the authors "by William Young, Susan Young, Roberts Day, Beatrice Borch". A congratulatory message states: "Congratulations! You are taking the next step to licensure. AATBS is happy to partner with Northcentral University to provide you a Marriage and Family Therapy Study Package to help you along the way." A "READ MORE" link is provided. The "PUBLISHER ACCESS CODE" section shows the code "WMYKB-BORSE-SUREN-ABATE-THRZA-LOOSE" and a "COPY CODE TO CLIPBOARD" button. The "PRODUCT DESCRIPTION" section states: "MindTap General Chemistry Online Courseware, 1st Edition." At the bottom, there is a large blue button labeled "ACCESS COURSEWARE".

# Inclusive ACCESS Content Instructions for McGraw-Hill Titles

## Student Access Instructions Option #1

- Sign into your Brightspace by D2L Account
- Navigate to your course
- Under your course, navigate to your **Content** area.
- From there you should see a Connect Assignment link.
- Click on the **Assignment link** and then click **Launch** to start the Connect Registration process.
- Enter academic email address and click begin.
- It will take you to account information to enter and create account for Connect.
- Agree to terms and conditions and click **Continue**
- Here you can redeem your ACCESS code, or It could be codeless, and no payment required in Connect. And just click confirm on the title available to you.
- Their Assignments will be visible in their LMS space.

# Q&A